



Ash Grove, Palmers Green, London, N13  
Chain Free £650,000 Freehold

**Anthony Webb**  
ESTATE AGENTS



# Ash Grove, Palmers Green, London, N13

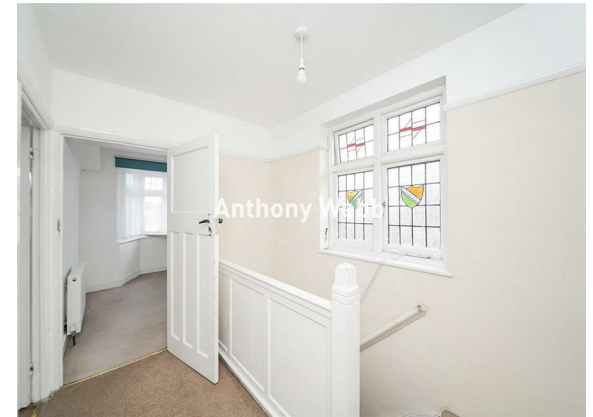
A well presented and extended three bedroom 1930s built end of terrace house with potential to further extend to side and rear as well as converting the ample loft space.

Ashgrove is a popular residential turning located between Hedge Lane and Barrowell Green and is close to Palmers Green shops, restaurants, bus routes and mainline station into Moorgate. Southgate high road and underground station are also a short bus ride away. There are various green spaces nearby including Hazelwood recreation ground, Firs Farm Wetlands and the New River Path.

The property consists of two spacious receptions, a kitchen/diner, two double bedrooms, one single bedroom, modern bathroom suite with 1930s original tiling, double glazing apart from original stained glass landing window, gas central heating, front garden, off street parking and a well maintained rear garden with decked area, side access and large timber shed/outbuilding.

Enfield Council Tax Band E

- Three bedrooms
- 1930s end of terrace house
- Two receptions
- Kitchen/diner
- First floor bathroom
- Building/extension possibility to side and rear
- Front garden + parking space
- Well maintained rear garden with large storage shed







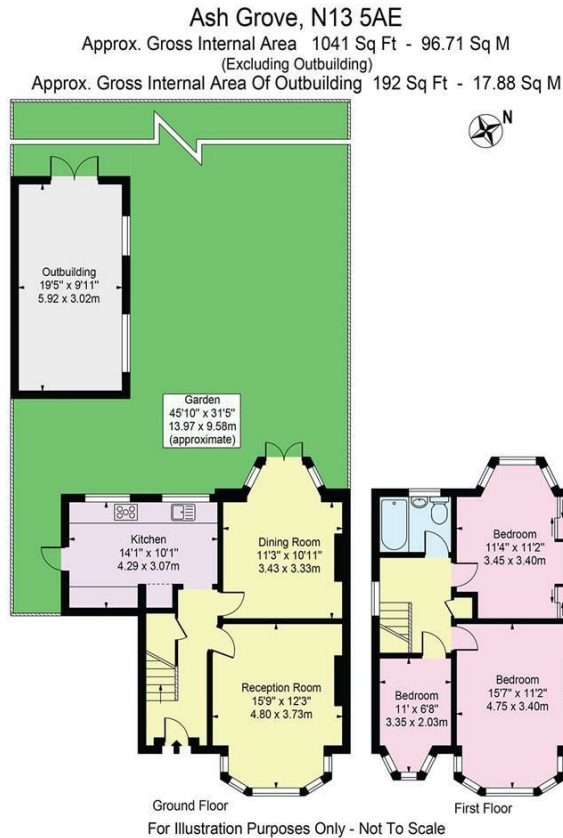
Ash Grove  
Palmers Green  
London  
N13 5AE

Tenure: Freehold  
Gross Internal Area: 1041.00 sq ft



348 Green Lanes, Palmers Green, London N13 5TJ  
020 8882 7888  
palmersgreen@anthonywebb.co.uk  
anthonywebb.co.uk

Energy Efficiency Rating		
	Current	Potential
Very energy efficient - lower running costs		
(82 plus) A		
(61-81) B		
(59-80) C		
(55-58) D		
(50-54) E		
(47-49) F		
(1-46) G		
Not energy efficient - higher running costs		
England & Wales EU Directive 2002/91/EC		
Environmental Impact (CO <sub>2</sub> ) Rating		
	Current	Potential
Very environmentally friendly - lower CO <sub>2</sub> emissions		
(82 plus) A		
(61-81) B		
(59-80) C		
(55-58) D		
(50-54) E		
(47-49) F		
(1-46) G		
Not environmentally friendly - higher CO <sub>2</sub> emissions		
England & Wales EU Directive 2002/91/EC		



Property particulars as supplied by Anthony Webb Estate Agents are set out as a general outline in accordance with the Property Misdescriptions Act (1991) only for the guidance of intending purchasers of lessees, and do not constitute any part of an offer or contract. Details are given without any responsibility, and any intending purchasers, lessees or third parties should not rely on them as inspection or otherwise as to the correctness of each of them. We have not carried out a structural survey and the services, appliances and specific fittings have not been tested. All photographs, measurements, floor plans and distances referred to are given as a guide only and should not be relied upon for the purchase of carpets or any other fixtures statements or representations of fact, but must satisfy themselves by or of fittings, gardens, roof terraces, balconies and communal gardens as well as tenure and lease details cannot have their accuracy guaranteed for intending purchasers. Lease details, service ground rent (where applicable) are given as a guide only and should be checked and confirmed by your solicitor prior to exchange of contracts. No person in the employment of Anthony Webb has any authority to make any representation or warranty whatever in relation to this property.